



# LITERACY INSTRUCTION Resources & Overview



## SCIENCE OF READING

is a world wide evidence-based field that focuses on how reading and writing develop, the causes of literacy difficulties, and effective teaching methods, emphasizing structured, explicit, and systematic instruction.



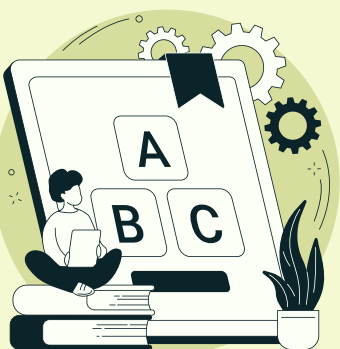
## STRUCTURED LITERACY

is a teaching approach that integrates foundational and higher-level skills through explicit instruction, systematic methods, and active practice.



## KEY LITERACY COMPONENTS

- Phonemic Awareness
  - Phonics(Writing)
  - Vocabulary
  - Comprehension
  - Fluency
- Oral language serves as the essential wrap-around tool!



## RESOURCES AND PROGRAMS

**Phonemic Awareness :** Heggerty  
**Phonics:** UFLI  
BUT an effective instruction can be also be achieved by just using simple, research-backed strategies and resources.



## UNIVERSAL SCREENER

is used to quickly identify students at risk for reading difficulties and support prevention-oriented approaches by being administered to all students multiple times per year.



## SCREENER CHARACTERISTICS

are standardized, brief, benchmark-linked assessments focused on early literacy indicators to identify students at risk and determine the need for further diagnostic assessment.



## TOOLS USED IN BC

- DIBELS:** Assesses risk and monitors early reading
- Acadience:** Provides benchmarks and measures essential early literacy
- aimsweb+:** Reading assessment with progress monitoring



## ASSESSMENTS

Gather detailed data on literacy skills to guide instruction and interventions, including diagnostic assessments for identifying struggles, profiles that monitor and track growth, and formative assessments for ongoing checks of understanding.